

Chemistry 4631

Instrumental Analysis

Lecture 6



Components of Optical Instruments

UV to IR

Basic components of spectroscopic instruments:

- stable source of radiant energy
- transparent container to hold sample
- device to isolate selected region of the spectrum for measurement
- detector to convert radiant energy to a signal
- signal processor and readout

Components of Optical Instruments

Some components of optical instruments use Lasers.

And some Lasers are based on semiconductor technology.

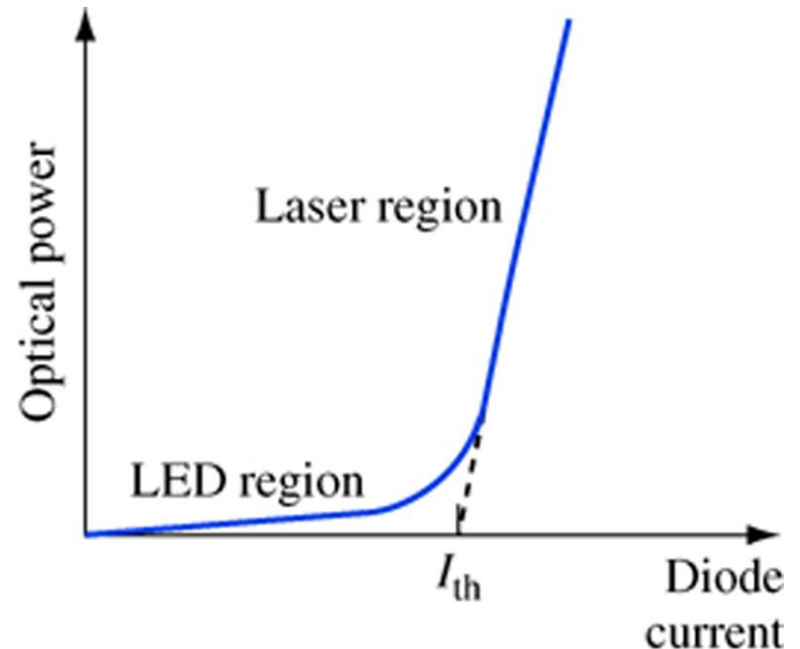
Many Line Sources are LASERS.

Components of Optical Instruments

Laser

Light **A**mplification by **S**timulated **E**mission of **R**adiation

- **High Intensities**
- **Narrow Bandwidths**
- **Coherent Outputs**



Components of Optical Instruments

Applications

- **CD/DVD Readers**
- **Fiber Optics**
- *Spectroscopy Sources*
- **Material Processing**
- **Photochemistry**

Laser Sources in UV, vis, and IR

Used for

- **high resolution spectroscopy**
- **kinetic studies**
- **routine analysis**

Components of Optical Instruments

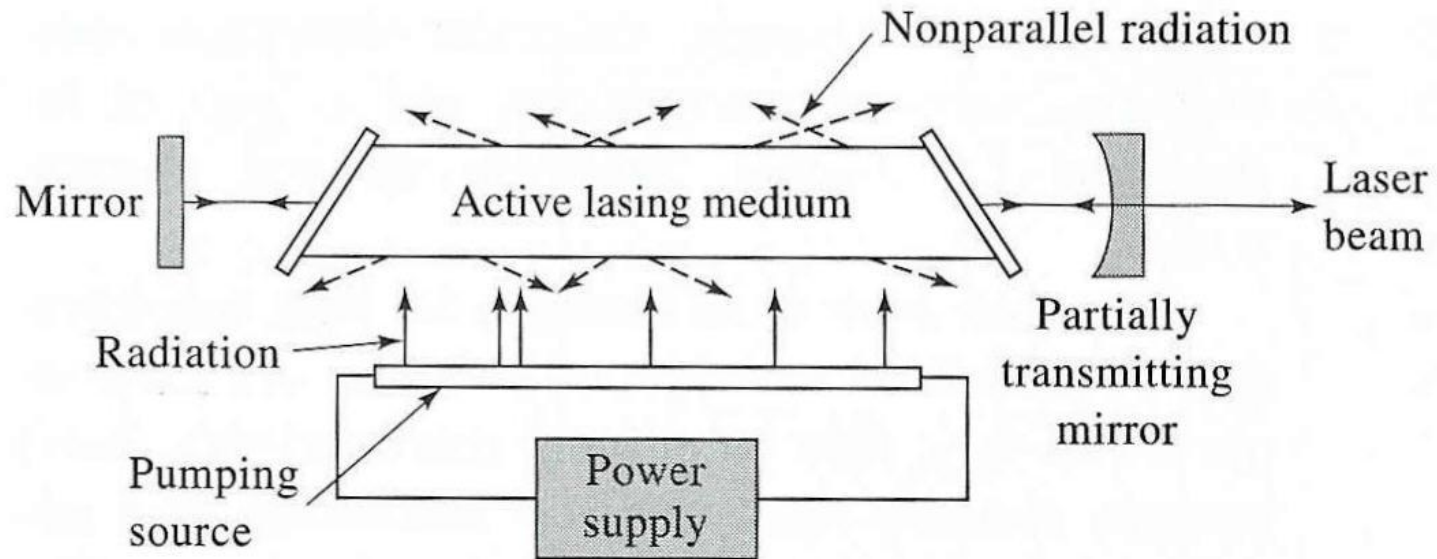
Background

In 1917 Einstein predicted that:

- under certain circumstances a photon incident upon a material can generate a second photon of
 - Exactly the same energy (frequency)
 - Phase
 - Polarization
 - Direction of propagation
- **In other words, a coherent beam resulted.**

Components of Optical Instruments

Laser



Nonparallel radiation dissipates out the top and bottom of the medium and parallel or coherent radiation is left.

Components of Optical Instruments

Laser Sources

Lasing Medium:

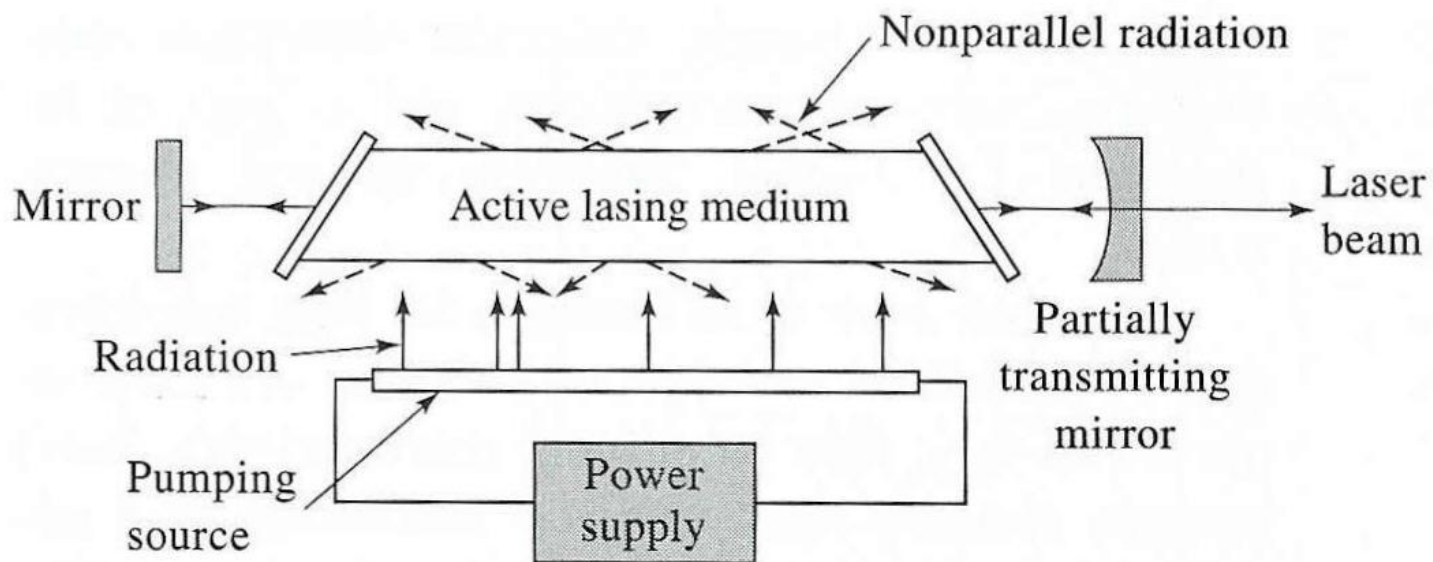
solid crystal (ruby)

semiconductor (gallium arsenide)

solution (organic dye)

gas (argon or krypton)

Components of Optical Instruments



Components of Optical Instruments

Laser

Processes include:

- **pumping**
- **spontaneous emission (fluorescence)**
- **stimulated emission**
- **adsorption**
- **population inversion**

Components of Optical Instruments

Pumping

Lasing Medium – must be activated or “pumped” using radiation from an external source.

This can be a few photons of the correct energy to trigger a cascade of photons of the same energy. Or could be an electrical discharge into a gas.

Components of Optical Instruments

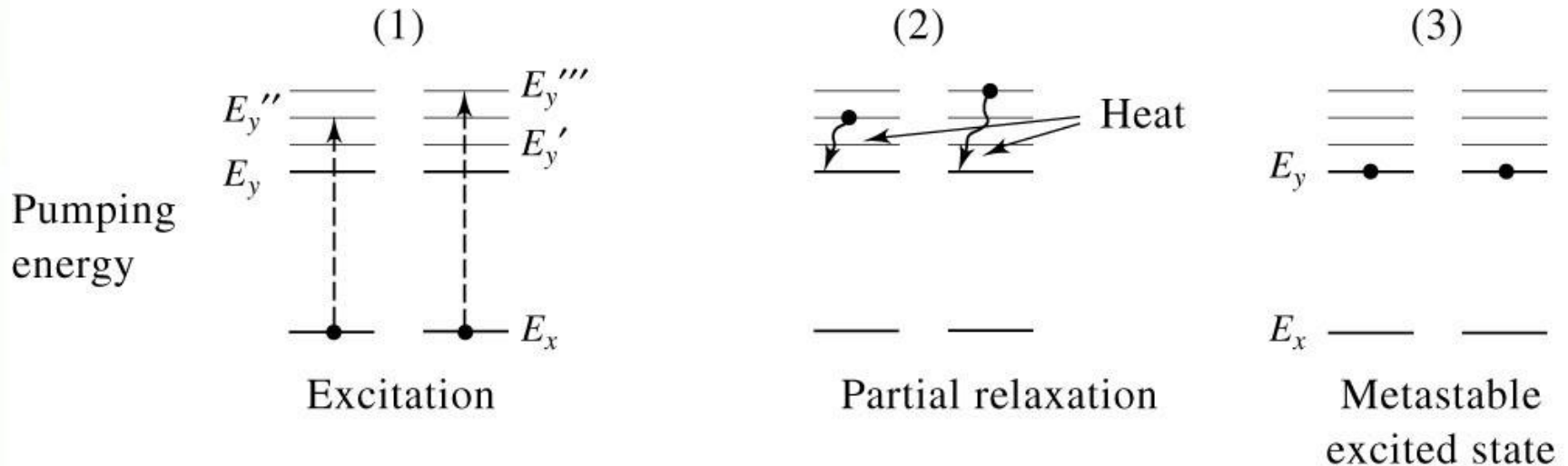
Pumping

Occurs when the medium is excited by external radiation or electricity.

This action populates higher electronic or vibrational energy levels of the active medium. Relaxation occurs through vibrations to the lowest excited level.

Components of Optical Instruments

Pumping



(a) Pumping (excitation by electrical, radiant, or chemical energy)

Components of Optical Instruments

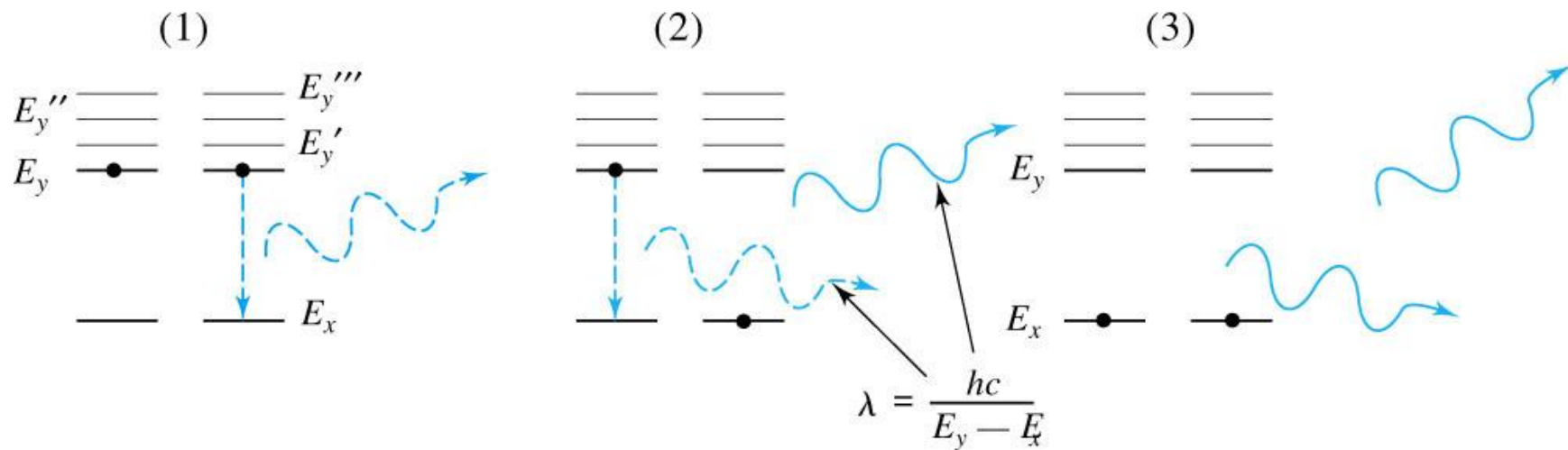
Spontaneous emission

The excess energy in the higher levels is lost by emission of radiation returning to ground state.

This type of emission is incoherent since it is a random process with species differing in direction and phase of emission.

Components of Optical Instruments

Spontaneous emission



(b) Spontaneous emission

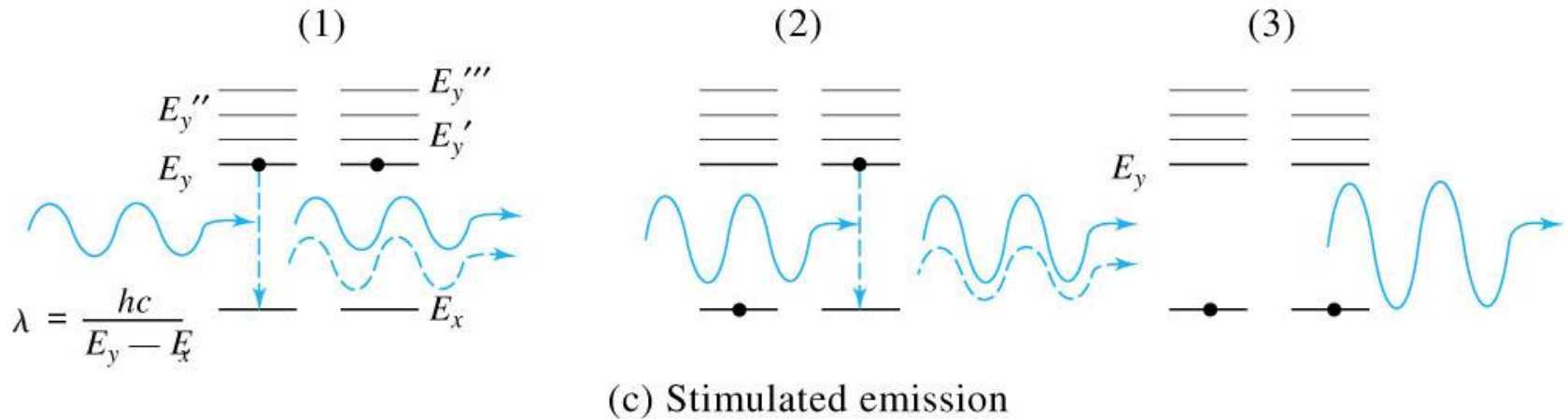
Components of Optical Instruments

Stimulated emission

Excited species are struck by photons with the same energy as that of the spontaneous emission energy. Causes immediate relaxation to ground state. This type of emission is coherent since the photons travel in phase and the same direction.

Components of Optical Instruments

Stimulated emission



© 2007 Thomson Higher Education

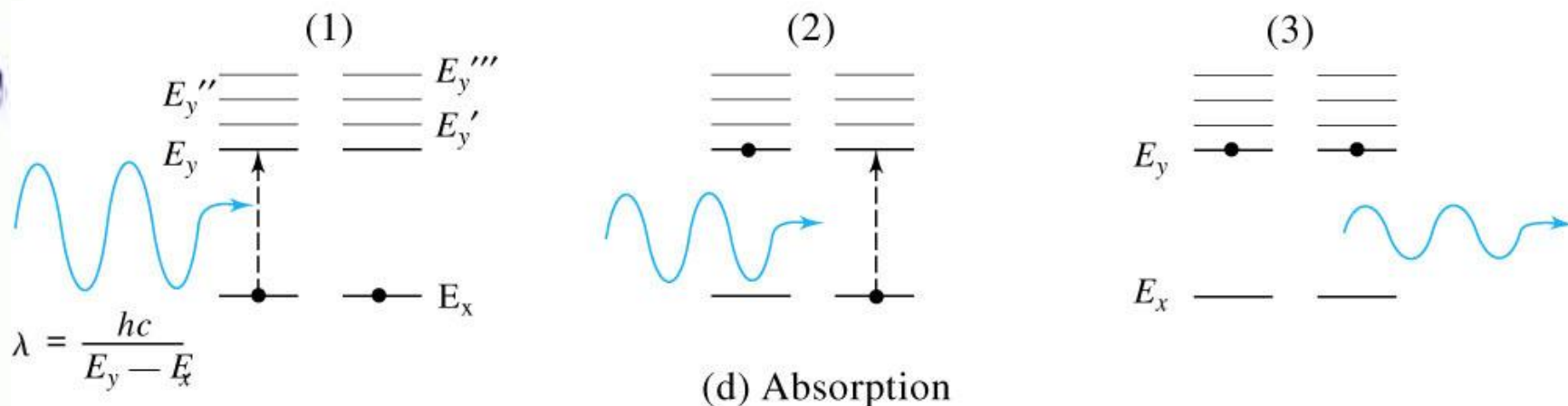
Components of Optical Instruments

Absorption

Process that competes with stimulated emission. Two photons of same energy are absorbed to produce a metastable excited state.

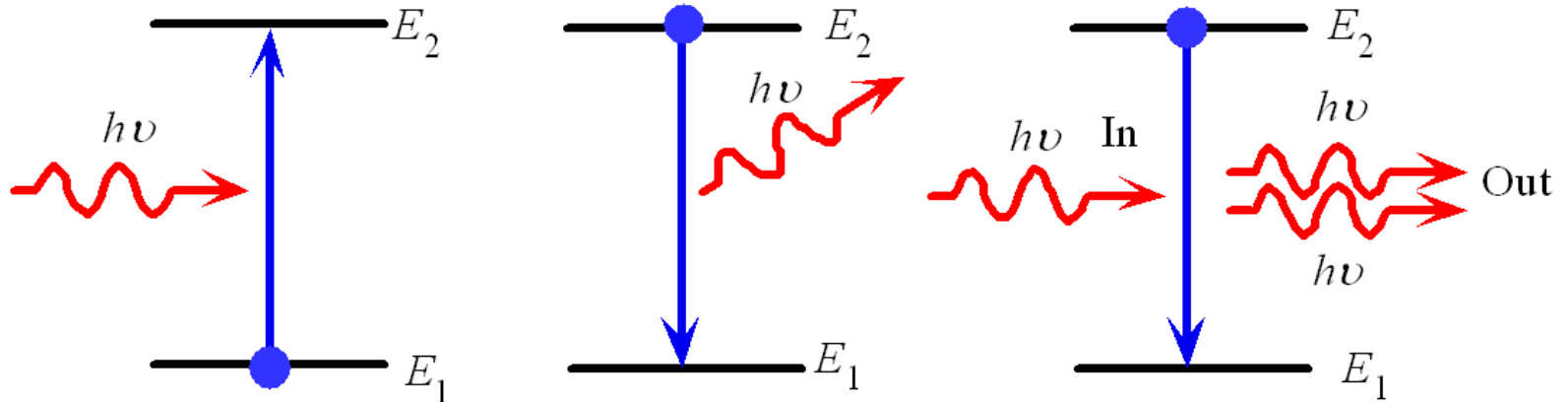
Components of Optical Instruments

Absorption



© 2007 Thomson Higher Education

Components of Optical Instruments



(a) Absorption (b) Spontaneous emission (c) Stimulated emission

Absorption, spontaneous (random photon) emission and stimulated emission.

Components of Optical Instruments

In a system, all three mechanisms occur.

However the stimulated emission is very sluggish compared to the spontaneous emission.

We need to have a much stimulated emission as possible for lasing action.

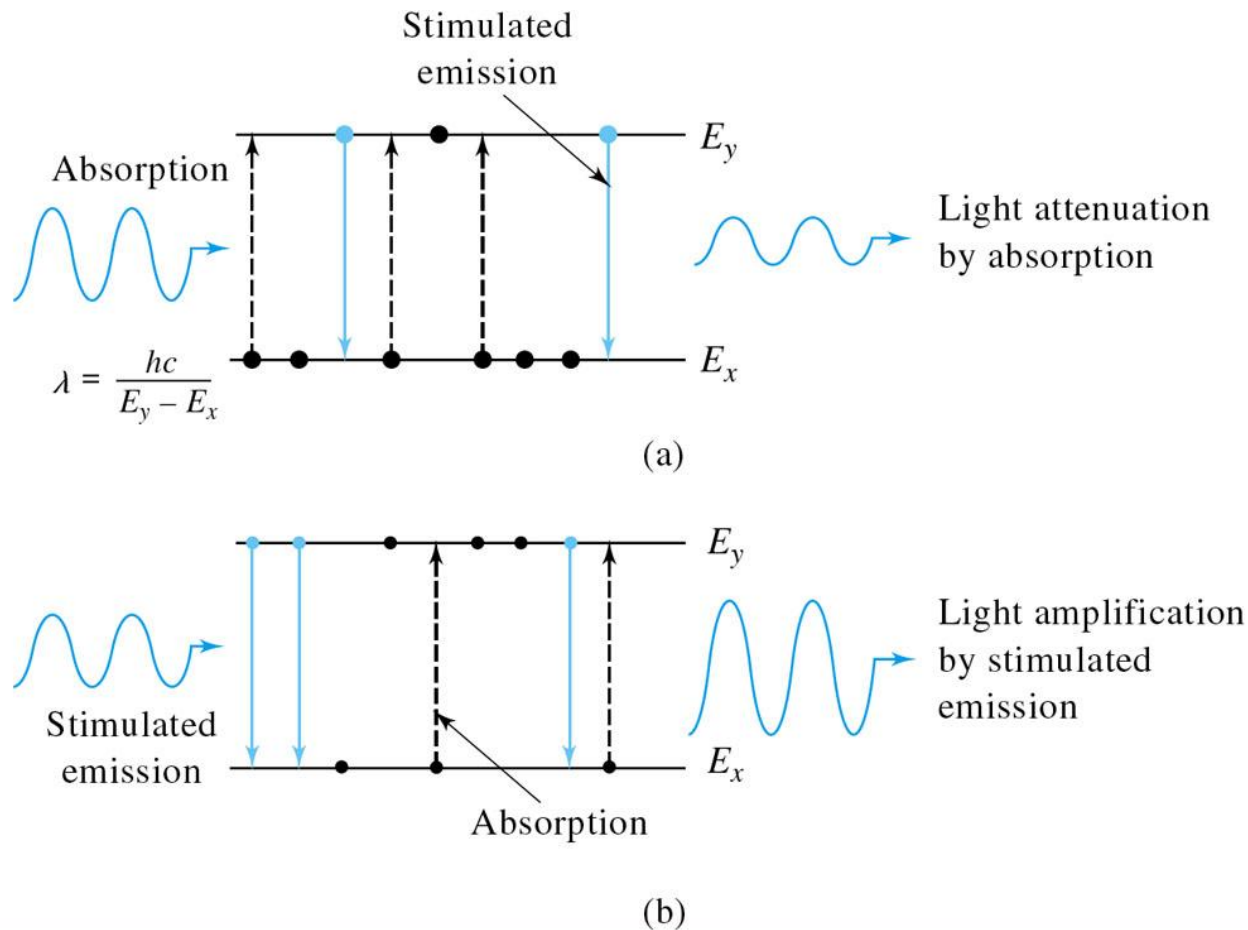
How?

Components of Optical Instruments

For Light Amplification to occur the number of photons produced by stimulated emission must exceed the number lost by absorption.

Stimulated emission $>$ Absorption

Components of Optical Instruments



Components of Optical Instruments

Stimulated emission > Absorption

This can only occur when the number of particles in the higher energy state exceeds the number in the lower.

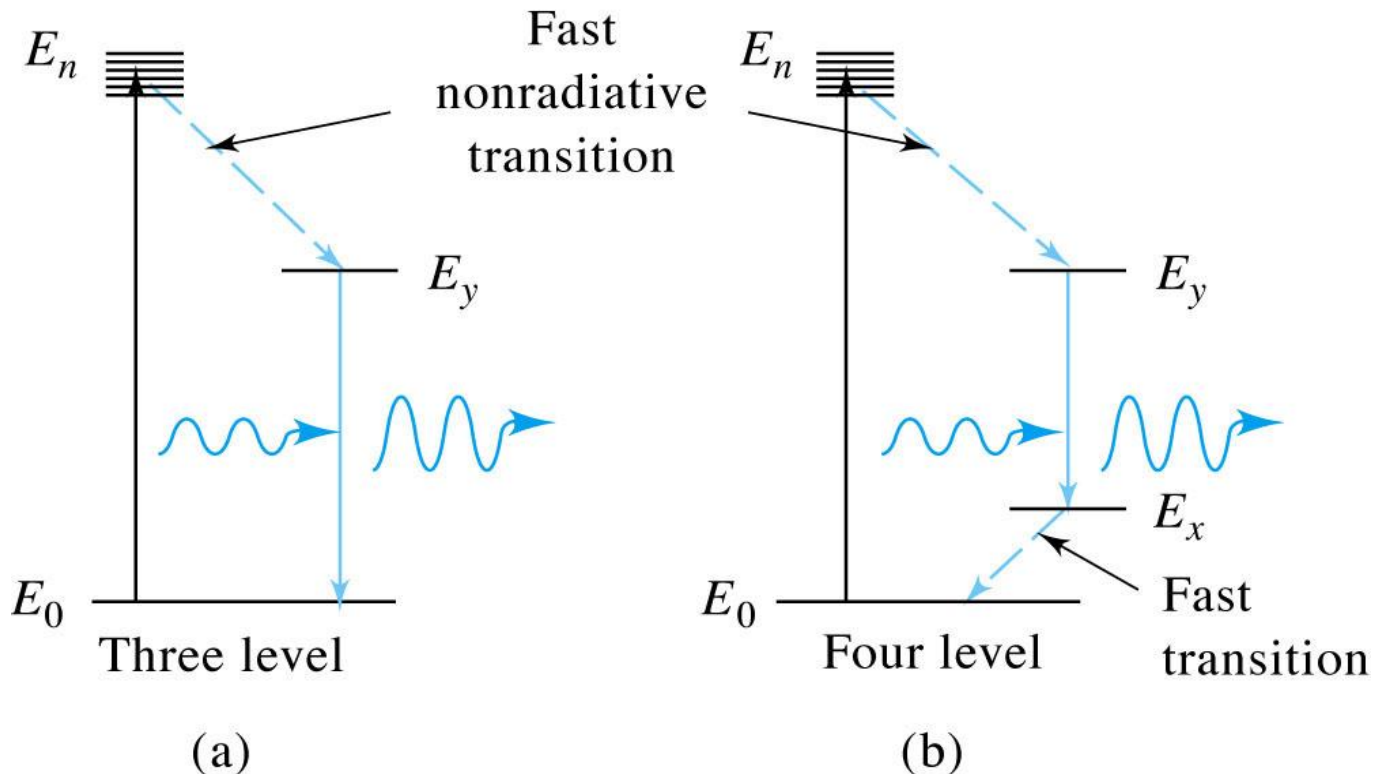
**This process is known as population inversion.
(created by pumping)**

Components of Optical Instruments

- It is not possible to achieve population inversion with a 2-state system.
- In 2-state system, the best we can get is $N_1 = N_2$.
- To create population inversion, a 3-state system is required.
- The system is pumped with radiation of energy E_{31} then atoms in state 3 relax to state 2 non-radiatively.
- The electrons from E_2 will now jump to E_1 to give out radiation.

Components of Optical Instruments

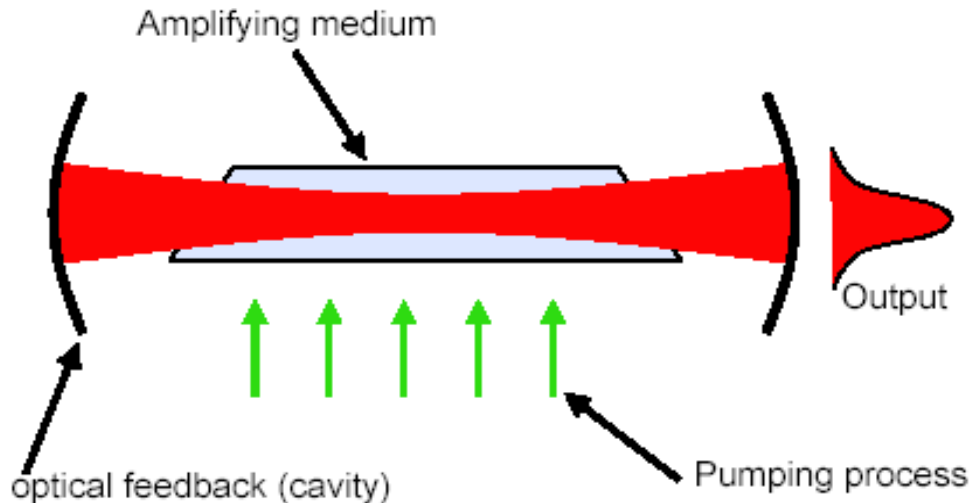
3- and 4- level laser systems



© 2007 Thomson Higher Education

Components of Optical Instruments

- Pumping process prepares amplifying medium in suitable state
- Optical power increases on each pass through amplifying medium
- If gain exceeds loss, device will oscillate, generating a coherent output



Components of Optical Instruments

Once the cascade begins the laser functions as a resonator, passing the radiation back and forth through the medium using mirrors. This generates even more photons – “amplification”.

Components of Optical Instruments

Recap

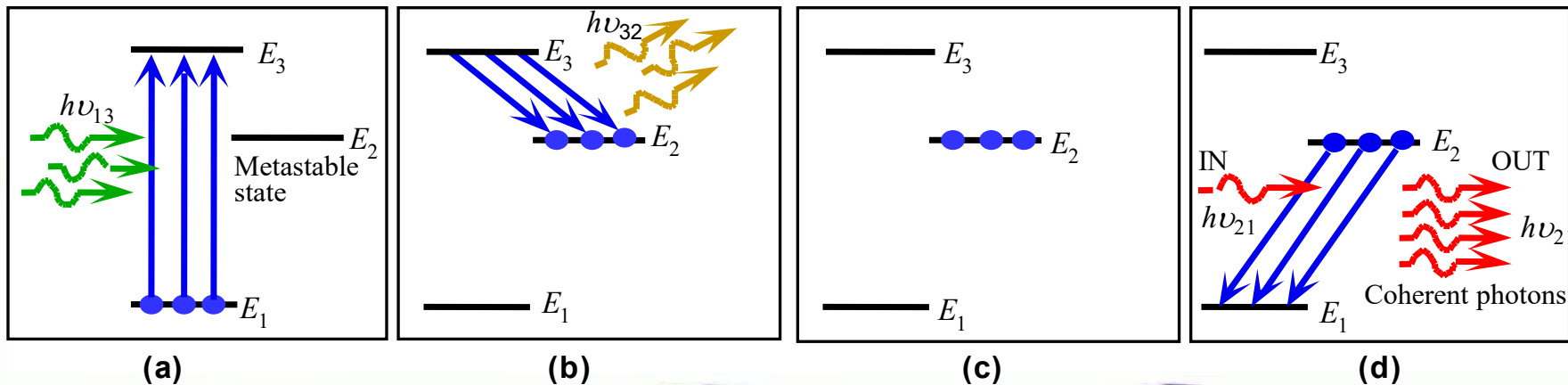
Excite atoms from E_1 to E_3 .

Exciting atoms from E_1 to $E_3 \rightarrow$ optical pumping

Atoms from E_3 decays rapidly to E_2 emitting $h\nu_{32}$

If E_2 is a long lived state, atoms from E_2 will not decay to E_1 rapidly

Condition where there are a lot of atoms in $E_2 \rightarrow$ population inversion.



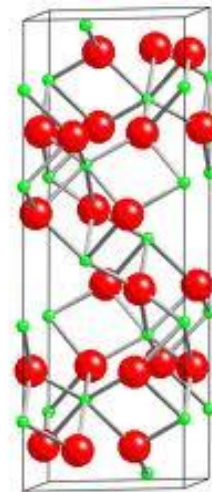
Components of Optical Instruments

Solid State

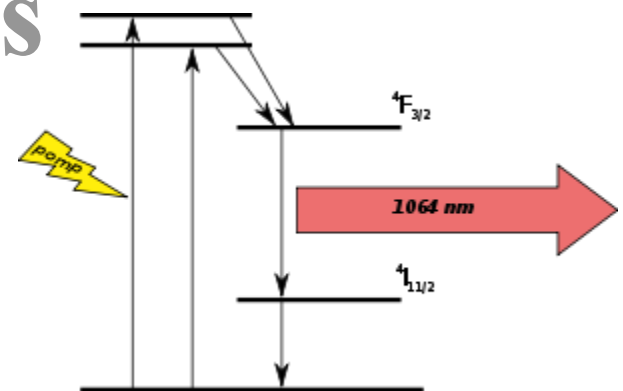
Ruby Laser – one of the first lasers, made up of Al_2O_3 with 0.05% Cr(III) in the Al (III) lattice. The Cr(III) is the active lasing material.

$\lambda = 694.3 \text{ nm}$ (has a deep red color)

Al – green
O - red



Components of Optical Instruments



Solid State

Nd:YAG Laser – most widely used. (4-level)
Lasing medium is made up of neodymium ion in a crystal of yttrium aluminum garnet ($Y_3Al_2(AlO_4)_3$, or $Y_3Al_5O_{12}$).
Very high radiant power output at 1064 nm and frequency doubled to give intense line at 532 nm.

Components of Optical Instruments

Gas Lasers

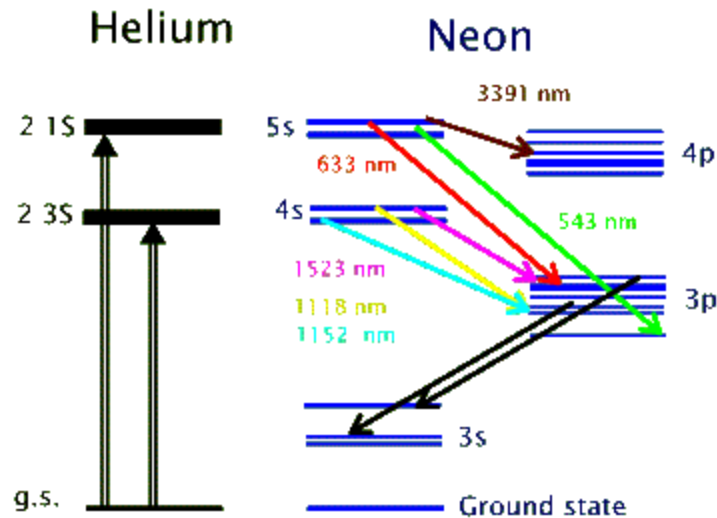
Four types

- neutral atom lasers (He/Ne)(most common)
- ion lasers with active species (Ar^+ or Kr^+)
- molecular lasers (CO_2 or N_2)
- excimer lasers (gas mixtures)

Components of Optical Instruments

Gas Lasers

- neutral atom lasers (He/Ne)(most common)
 - Low cost and maintenance, reliable, low power consumption, 632.8 nm



- the two excited states of helium, 3S and 1S, get populated as a result of electromagnetic pumping. Both of these states are metastable and do not allow de-excitations via radiative transitions. Instead, the helium atoms give off their energy to neon atoms through collisional excitation. In this way the 4s and 5s levels in neon get populated.

Components of Optical Instruments

Gas Lasers

- **ion lasers with active species (Ar^+ or Kr^+)**
 - Ar^+ 514.4 and 488.0 nm lines of high intensity
 - 4-level device
 - Argon ions formed by electrical discharge
 - Go from ground state (3 principle quantum #) to 4p states, lasing occurs when relax to 4s state
 - Very high intensity – used for Raman

Components of Optical Instruments

Gas Lasers

- **molecular lasers (CO₂ or N₂)**
 - CO₂ used in IR 10.6 μm
- **eximer lasers (gas mixtures)**

Components of Optical Instruments

Dye Lasers

Continuously tunable over a 20 - 50 nm range. (wider range of λ 's)

Bandwidth \sim 0.01 nm.

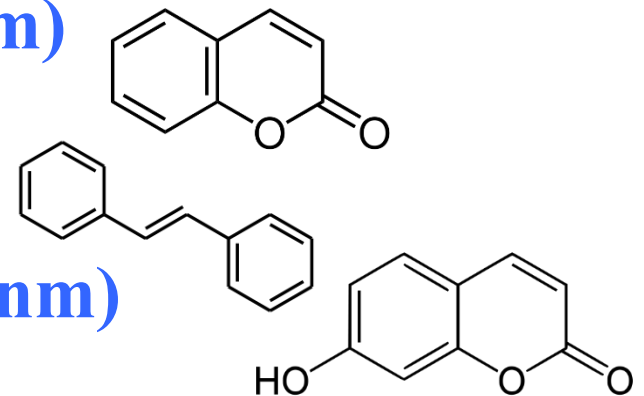
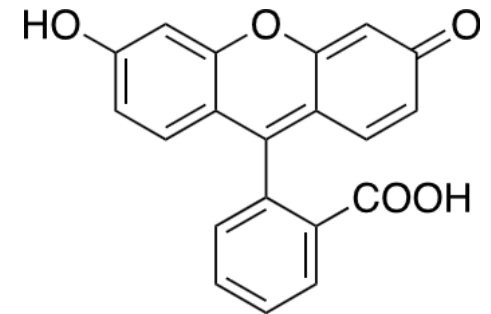
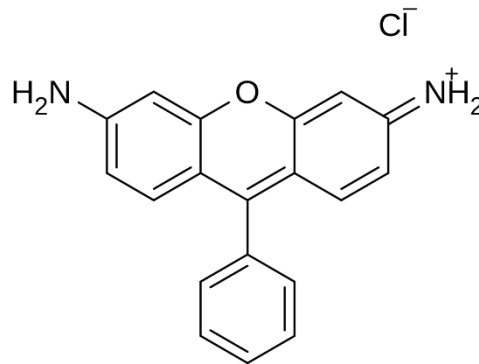
Active material is an organic dye that fluoresces in the UV, vis, or IR region.

Components of Optical Instruments

Dye Lasers

Examples:

- rhodamine 6G, can be tuned from 635 nm (orangish-red) to 560 nm (greenish-yellow)
- fluorescein (green, 530–560 nm)
- coumarin (blue 490–620 nm)
- stilbene (violet 410–480 nm),
- umbelliferone (blue, 450–470 nm)



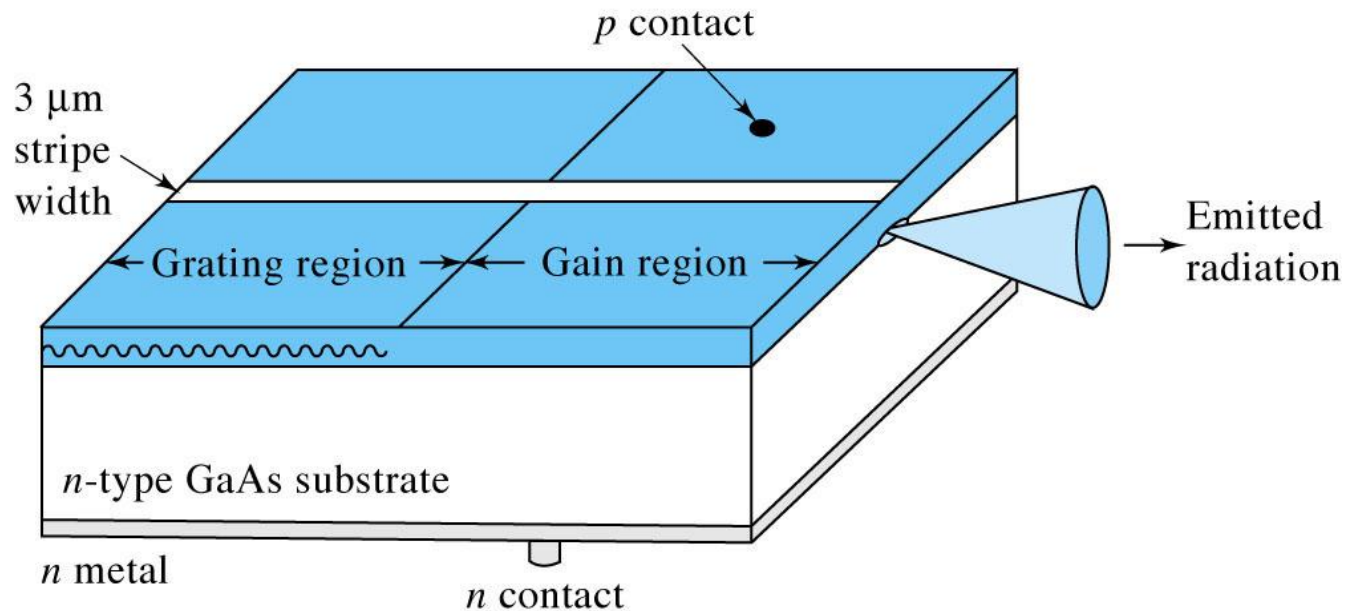
Components of Optical Instruments

Semiconductor Diode Lasers

Apply a voltage across a semiconductor diode in the forward direction to excite electrons into the conduction band creating hole-electron pairs. When the electrons relax into the valence band energy is released equal to the band-gap energy. $E_g = h\nu$

Components of Optical Instruments

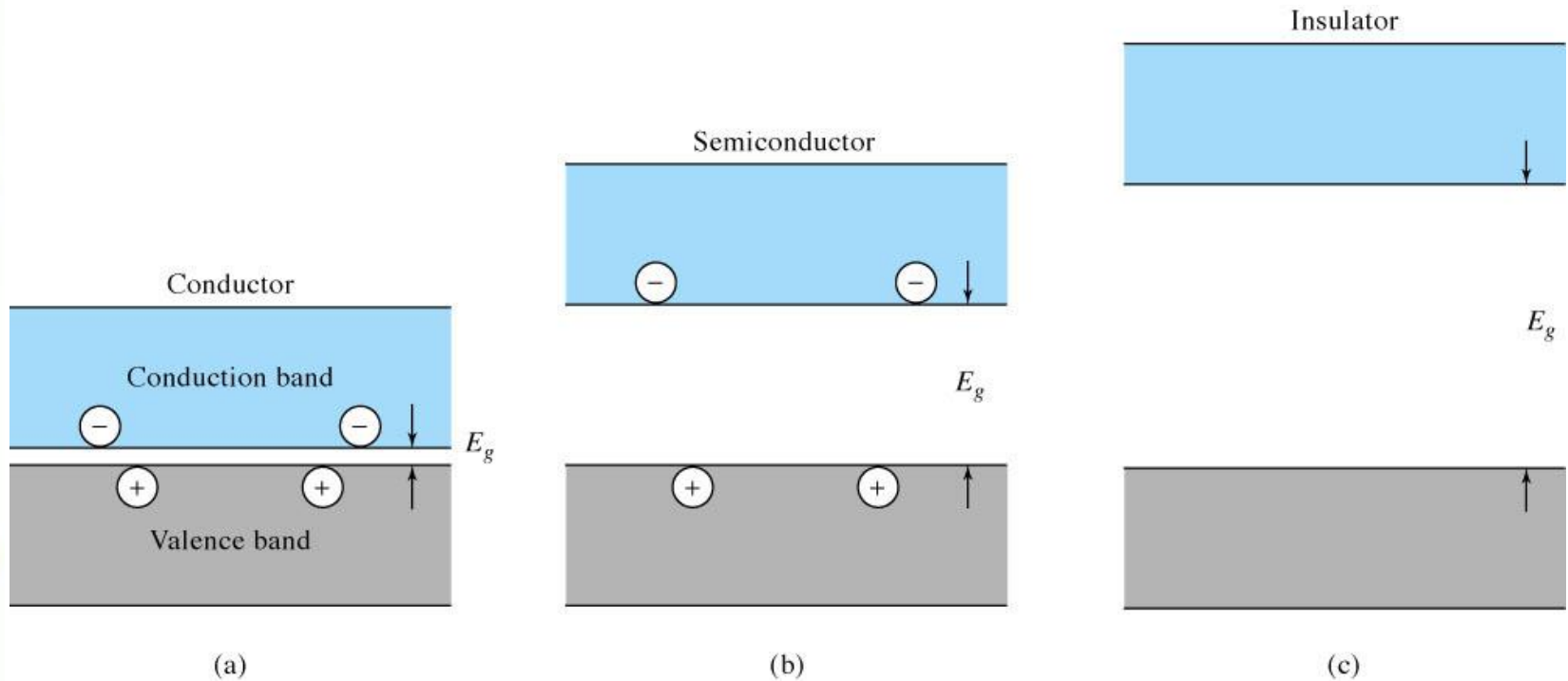
Semiconductor Diode Lasers



© 2007 Thomson Higher Education

Components of Optical Instruments

Semiconductor Diode Lasers



© 2007 Thomson Higher Education

Assignment

- Read Chapter 6
- Read Chapter 7
- Read Chapter 13

- Go over Lab Lecture 2

- HW3: Ch. 7: 2-4, 8-13, and 16 (Due 1-30)

